
BUS PASS MANAGEMENT SYSTEM

**Miss. Shinde Sanskruti D.*1, Miss. Adhav Sanika P.*2, Miss. Ansari Afreen H.*3,
Miss. Deshmukh Namrata D.*4**

*1,2,3,4Student, Dept. Of Computer Engineering, MIT Polytechnic Yeola Maharashtra, India.

DOI : <https://www.doi.org/10.56726/IRJMETS49165>

ABSTRACT

The Bus Pass Management System is a digital solution designed to streamline and automate the issuance, renewal, and tracking of bus passes. This system enhances the efficiency of public transportation services by reducing manual processes, ensuring accurate record-keeping, and facilitating convenient access to bus passes for commuters. With user-friendly interfaces and secure data management, the Bus Pass Management System aims to improve overall transit system operations and enhance the passenger experience.

I. INTRODUCTION

In today's fast-paced urban environment, efficient public transportation is integral to the smooth functioning of cities. The introduction of the Bus Pass Management System represents a pivotal step towards modernizing and optimizing the management of bus passes, a crucial aspect of the public transportation ecosystem. With the escalating demand for reliable and convenient commuting options, traditional methods of issuing and handling bus passes have become increasingly cumbersome and prone to errors.

The Bus Pass Management System is a comprehensive digital solution designed to address these challenges by automating and centralizing the entire bus pass lifecycle. This system aims to revolutionize the way bus passes are issued, renewed, and tracked, ensuring a seamless experience for both transit authorities and commuters alike. By leveraging advanced technologies, such as database management systems and secure authentication protocols, the Bus Pass Management System guarantees the accuracy, security, and efficiency of pass-related transactions.

This innovative system also facilitates real-time monitoring of pass usage, allowing transit authorities to gather valuable insights into passenger trends and optimize routes accordingly. With an intuitive and user-friendly interface, the system provides commuters with easy access to the application process, reducing the administrative burden on both passengers and transportation agencies.

In an era where digital transformation is reshaping various sectors, the Bus Pass Management System emerges as a vital tool for enhancing the overall effectiveness of public transportation services. It not only streamlines administrative processes but also contributes to a more sustainable and eco-friendly urban mobility landscape. As cities continue to grow and evolve, embracing cutting-edge solutions like the Bus Pass Management System becomes imperative to meet the rising demands for efficient, reliable, and user-centric public transportation systems

II. LITERATURE SURVEY

In the existing system bus pass booking and renewal procedure are carried out manually. The person has to visit the token and have to submit the details and then they have to wait for acceptance. For each and every process there is time limit specified if the person fails to go on time then all the arrangement will be cancelled. In this live system was used to bus details continue through file. And after bus details are stored to computerize. The Project standard has to enter all the feature of project, documents, and tasks. And, also the conservation team details and also attempt evaluate. For this motivation the organization continue the size of the document, source code and update the details about team member's details manually. Which is much of time gobble process and more most of all it is error prone. At present system bus pass collect from store very rare one. User can facing lot of issue.

DFD for Bus Pass Management System:

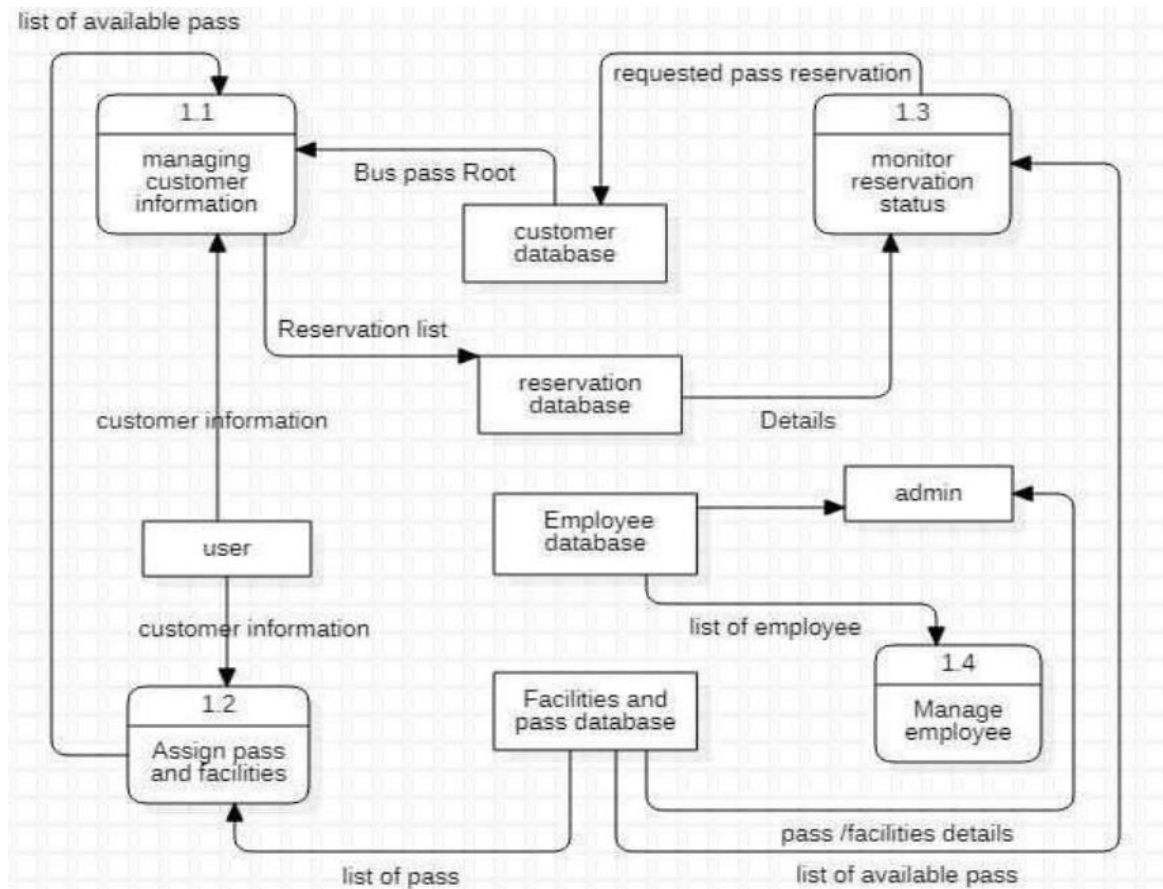


Figure 1: System Function Module Diagram

Online Bus Pass management system will help save your time and renewal bus passes without standing in a line for hour near counters. It can find all the bus pass related information online without goes to the bus station. The paying can be ready online via credit. Administrator can maintain Add Bus Pass Route, View Applied User, Approval Pass Bus, Bus Pass Holders, Bus Pass Renewal details. The advance system overcomes the drawbacks in the existing system. In the proposed system user register their details through online and get their unique username and password for further processing. The bus pass will be individual for different types of users. In this bus pass, all the required details such as student name, address, date of birth, mail id, name of the school, power period, amount paid (free for government school students) and photo copy of the candidate are provided. Instead of school details, working organization particular will be provided in route bus pass. The renewal process can be done monthly as per user wish. Based on that renewal period amount will be subtract.

Module Description Admin

- Add Bus Pass Route
- View Applied User
- Bus pass Holder
- Renewal

Passenger

- View Route
- Apply Bus pass
- Paid Status
- Renewal

III. EXPERIMENTAL RESULTS

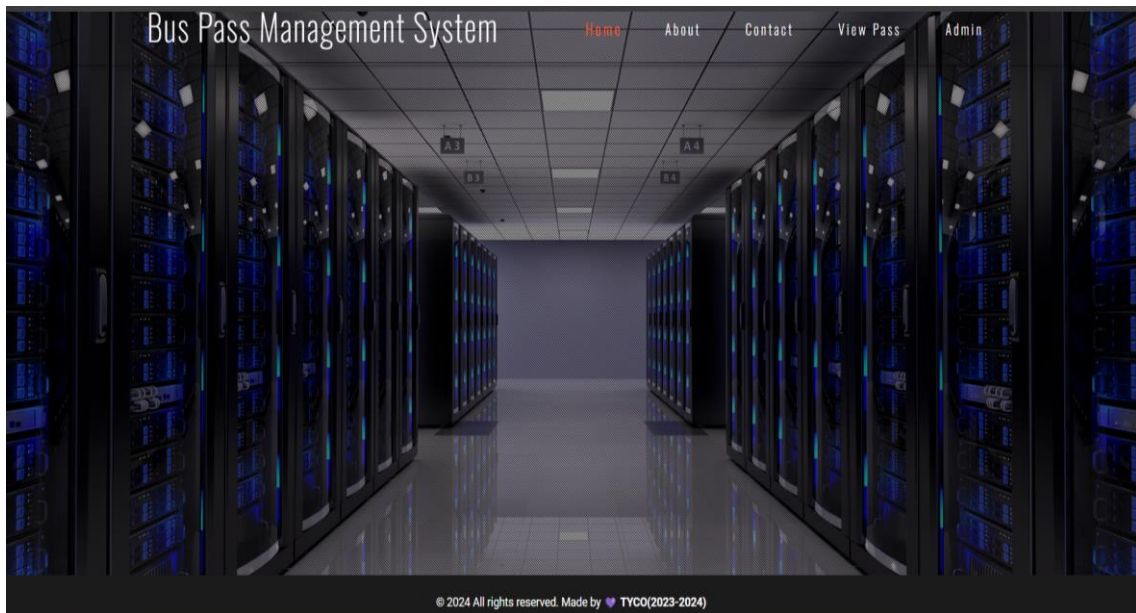


Figure 2: Home Page

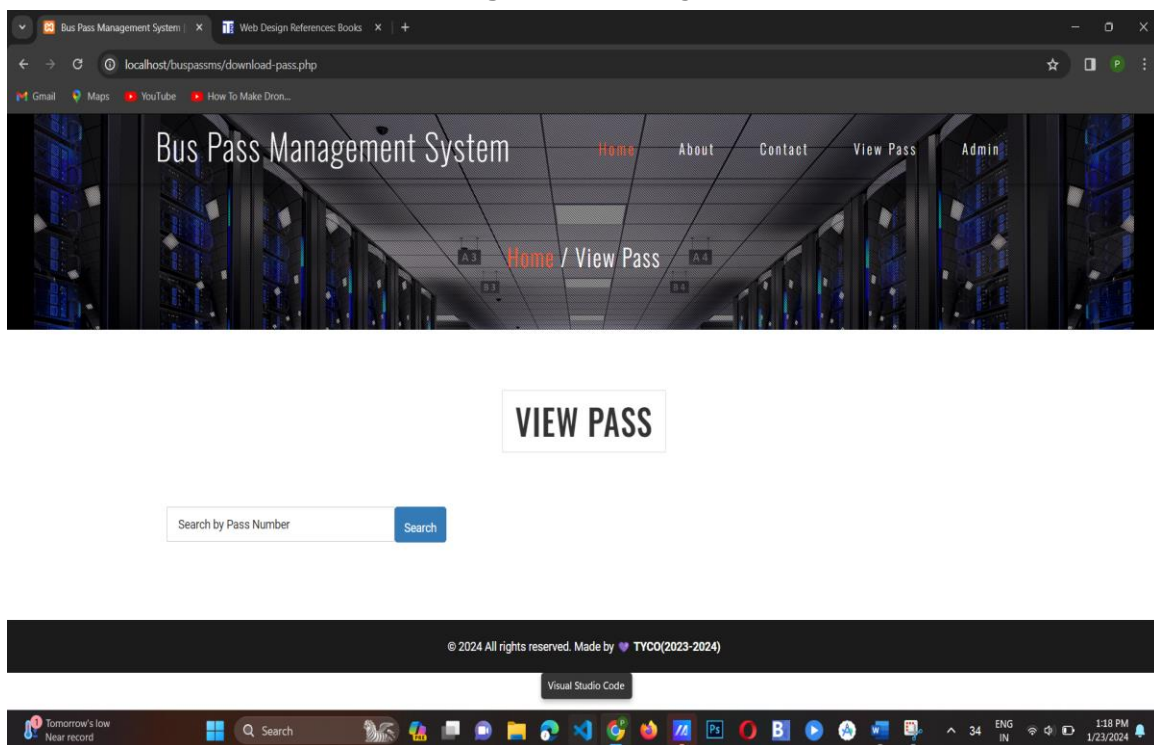


Figure 3: View Pass

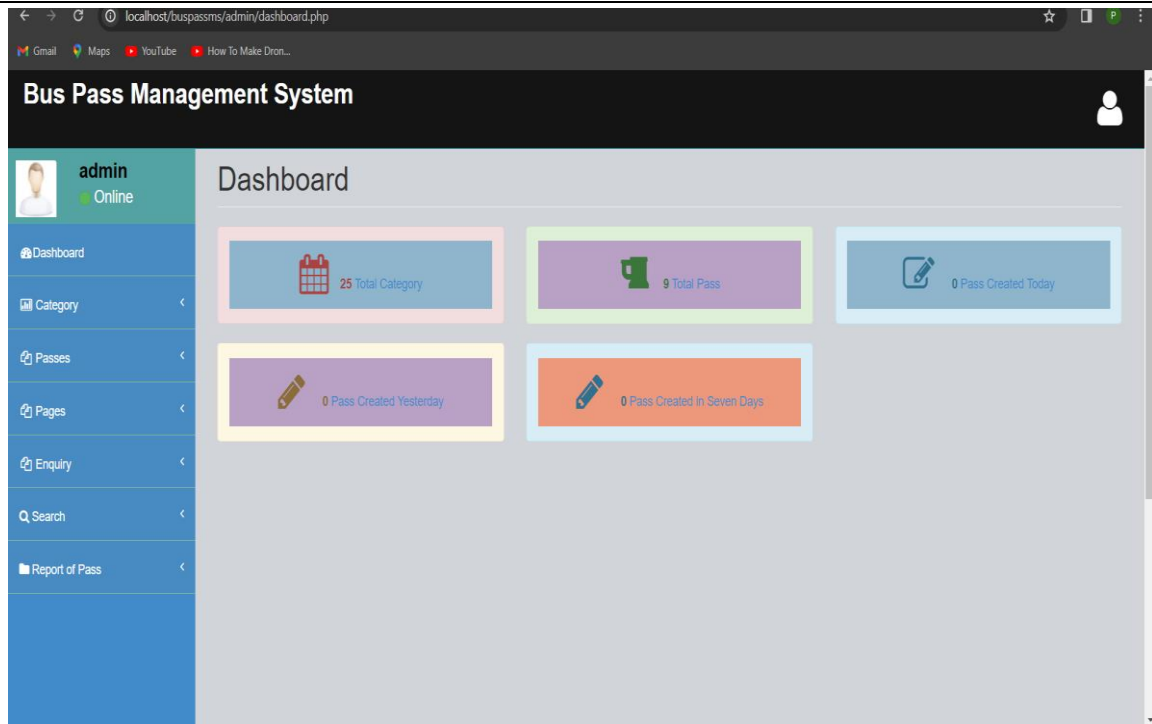


Figure 4: Admin Module

IV. CONCLUSION

The Bus Pass Management System makes getting bus passes easier. It helps with things like applying for passes, renewing them, and keeping track of their use. This system is like a smart helper for bus services, making things smoother for both the people who ride the buses and those who run them. It keeps everything safe and organized, and it's simple for everyone to use. Overall, it's like a big step forward to make bus travel better for everyone.

V. REFERENCES

- [1] Barrell, Dylan. Agile Accessibility Explained: A practical guide to sustainable accessible software development, Amazon Digital Services, 2019.
- [2] Hricko, Mary (Editor). Design and Implementation of Web-Enabled Teaching Tools, Idea Group Publishing, 2002.
- [3] Pickering, Heydon. Apps For All: Coding Accessible Web Applications, Smashing Magazine GmbH, 2014.